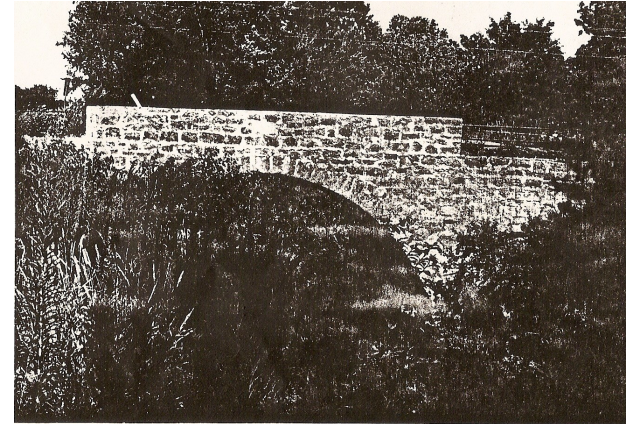


*The Nebraska State
Historical Society
designated
the KEIM STONE ARCH BRIDGE
as Historic
on June 29, 1992
placing it on the
National Register of
Historic Places
of
United States Department of Interior
National Park Service*



Keim Stone Arch Bridge

*Located 3 miles east and
1 mile north of Tecumseh, NE
off of Highway #136*

For more information call 402-335-5900

**JOHNSON COUNTY
ECONOMIC DEVELOPMENT COALITION**

Keim Stone Arch Bridge

The Keim Stone Arch Bridge was built in 1916 by the Keim Cement Company, as indicated on the bridge itself.

Located three miles east and one mile north of Tecumseh, the Keim Stone Arch Bridge spans an unnamed stream in a rural Johnson County setting that has changed little since the structure's period of significance. Other than maintenance-related repairs, the bridge remains essentially unaltered as it continues to carry vehicular traffic. The Keim Stone Arch Bridge retains a high degree of integrity of location, design, setting, workmanship, materials, feelings and association.

The Johnson County Commissioners' Record reveals only one payment to the Keim Cement Company in 1916, on September 4th for \$1121.16. The Keim Cement Company was one of the primary bridge builders in the county, and appears to have been the only builder of stone bridges and culverts.

The company made its first claim against the county for stone bridge work in 1906, followed by at least ten other claims for stone bridges and culverts.

George Phillip Keim founded the general-construction firm in Tecumseh in 1882. His sons, Peter and Jacob, later joined him, and the company became known as Keim and Sons. The Keim family continued to operate the firm until at least the 1950's.

In the early years, the company worked primarily in Johnson, Nemaha and Pawnee Counties. It became involved in highway construction in 1918, and was engaged in highway projects throughout Nebraska by 1956. Major commissions reportedly include the Johnson County Home, the Tecumseh Fire Department building and "construction of structures on one of the first highway projects in southeast Nebraska - No. 3 highway between Tecumseh and Crab Orchard."

The Keim Stone Arch Bridge is a rare, well-preserved example of early twentieth century stone arch bridge construction: the only surviving stone bridge built by this prominent local bridge builder.

Description of the Keim Stone Arch Bridge

Span number: 1

Span length: 28.0 ft.

Total length: 29.0 ft.

Roadway width: 18.0 ft.

Construction date: 1916

Construction cost: \$1,121.16

Current condition: good

Alterations: none

Superstructure: limestone arch

Substructure: stone abutments

Floor/decking: gravel over earth fill

Other features: Marble plate on parapet:

Built by Keim Cement Co.

1916